

# **Pulmonary Circulation Lab: Lesson Plan**

## **Resources**

Required resources for students:

- Visible Body Suite
- Lab activity worksheet

Additional resources for students and teachers:

- This lesson assumes that students have a basic understanding of the circulatory system. They can read the articles on this page for an introduction to the circulatory system:  
<https://www.visiblebody.com/learn/circulatory>

## **Objectives**

At the end of this lesson, students should be able to:

1. Identify the key structures of the heart.
2. Explain the pulmonary circuit, identifying the pathways of deoxygenated and oxygenated blood through the heart.

In their answers, students will name the following structures: Vena cava, pulmonary arteries, aorta, pulmonary veins, right atrium, left atrium, right ventricle, left ventricle, tricuspid valve, mitral valve, aortic valve, and pulmonary valve.

## **Introduction**

10 minutes: Present the pathway of blood from the body, through the heart, into the lungs, and back out. Tell your students to keep in mind that the heart works like a double pump: the right and left sides have different jobs. After your overview presentation, tell your students to use the worksheet and Visible Body Suite to review the pathway of blood through the heart and learn the names of the structures involved. You can have your students do this alone or in groups.

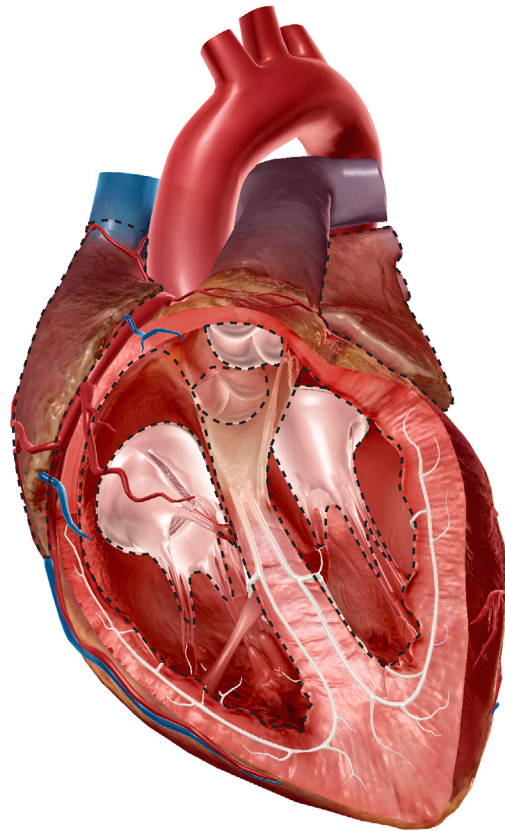
## **Student Activities**

30 minutes: Have your students complete the four activity worksheets in this lesson. Check their work using the answer key.

If you're doing this activity in class, you can use these four images to create stations.

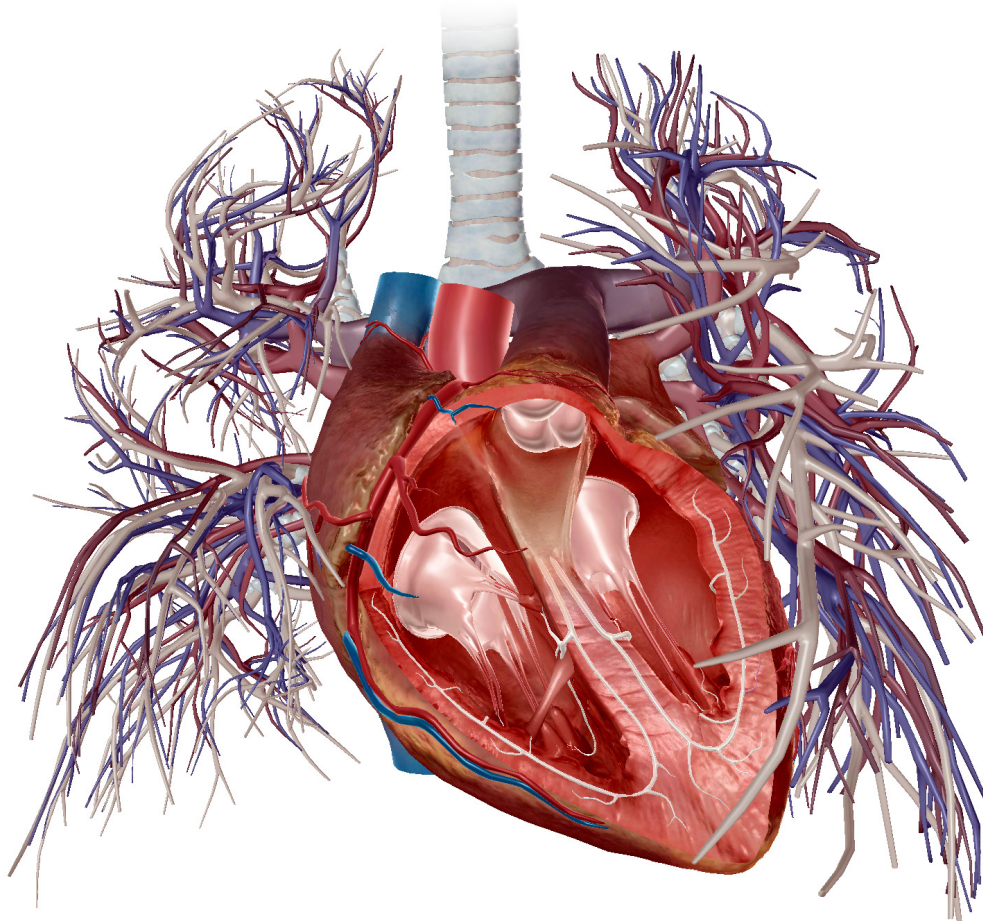


**Activity 1: Pulmonary Circulation Lab**



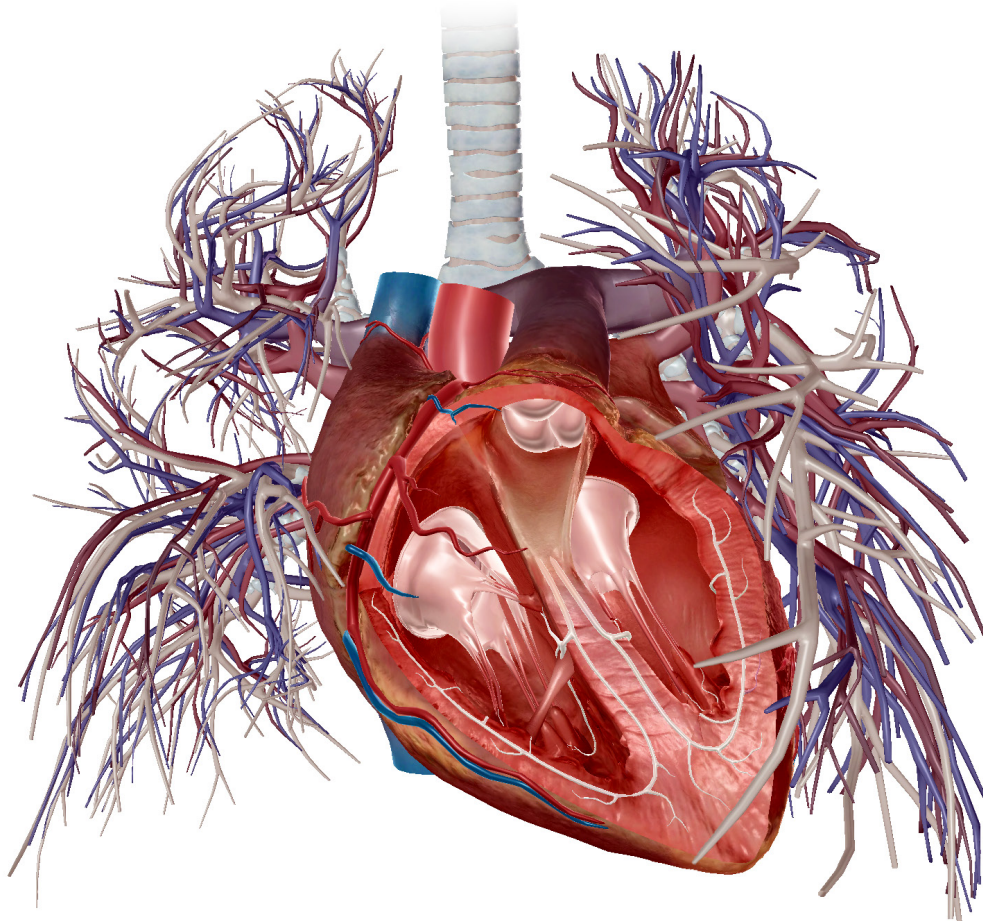


## **Activity 2: Pulmonary Circulation Lab**





### **Activity 3: Pulmonary Circulation Lab**





### **Activity 4: Pulmonary Circulation Lab**

