


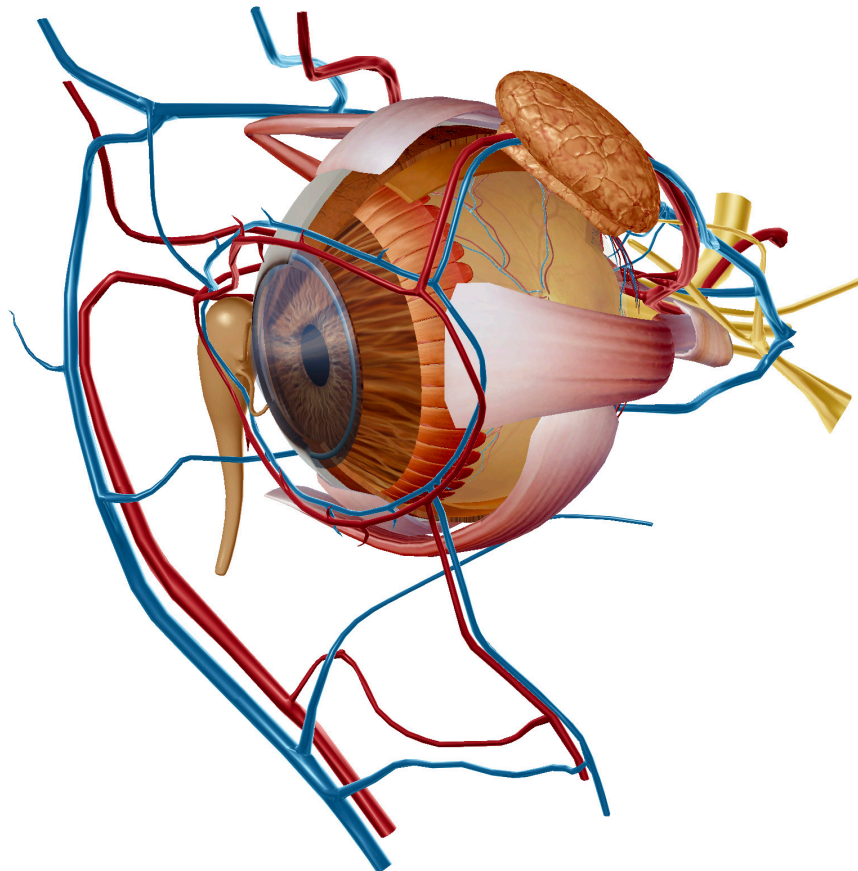
Activity 1: Anatomy of the Eye and Ear Lab

1. Launch the view!

- Launch Human Anatomy Atlas.
- Navigate to Quizzes/Lab Activities, find the Eye and Ear Lab section.
-  **Launch Augmented Reality mode and scan the image below.**
- Don't have AR? Select **view 1. Eye.**

2. Explore the eye.

- Find each structure in the right column, study its location, read the definition, and listen to the pronunciation.
- In the table, list each structure from the word bank under the correct layer of the eye.



Name: _____

Date: _____

Word bank:

- Choroid
- Ciliary body
- Cone cells
- Cornea
- Iris
- Retina
- Rod cells
- Sclera


Fibrous Layer	Vascular Layer	Inner Layer

Name: _____

Date: _____

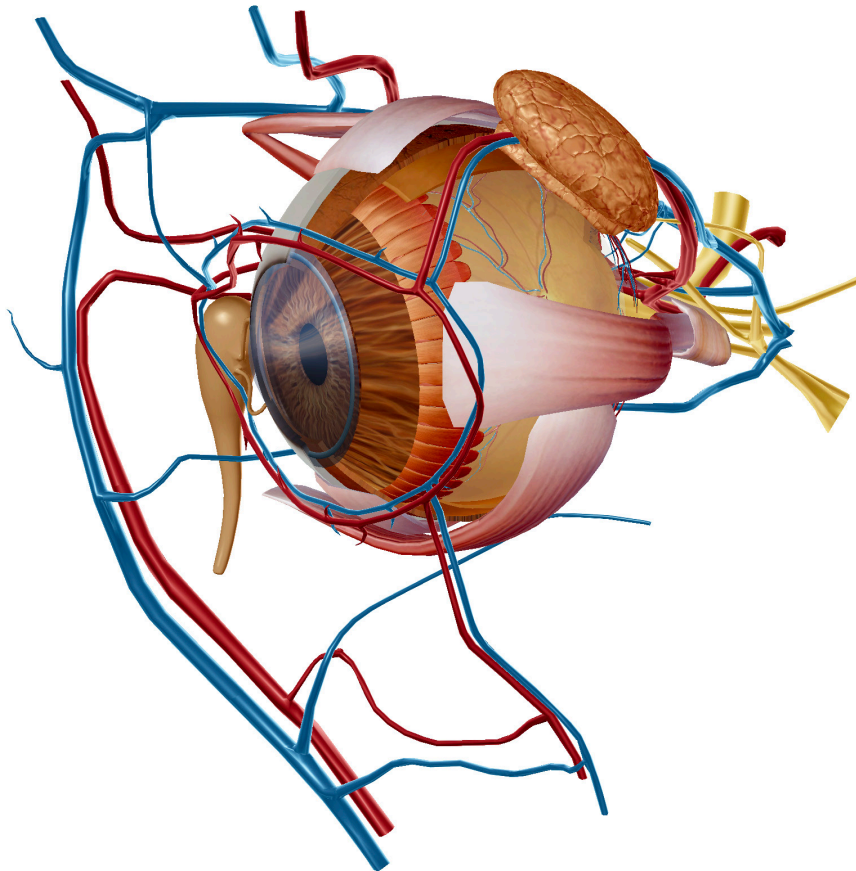
Activity 2: Anatomy of the Eye and Ear Lab

1. Launch the view!

- Launch Human Anatomy Atlas.
- Navigate to Quizzes/Lab Activities, find the Eye and Ear Lab section.
-  **Launch Augmented Reality mode and scan the image below.**
- Don't have AR? Select **view 1. Eye.**

2. Find the key structures of the eye.

- Read the definition of the structures listed in the word bank.
- In the table, list each structure from the word bank under the function it performs.



Name: _____

Date: _____

Word bank:

- Choroid
- Ciliary body
- Cornea
- Eyelid
- Inferior oblique
- Inferior rectus
- Iris
- Lacrimal gland
- Lacrimal sac
- Lateral rectus
- Lens
- Medial rectus
- Optic nerve
- Retina
- Sclera
- Superior rectus


Protection and Nutrition	Movement	Accommodating Light	Nerve Impulse Transmission

Name: _____

Date: _____

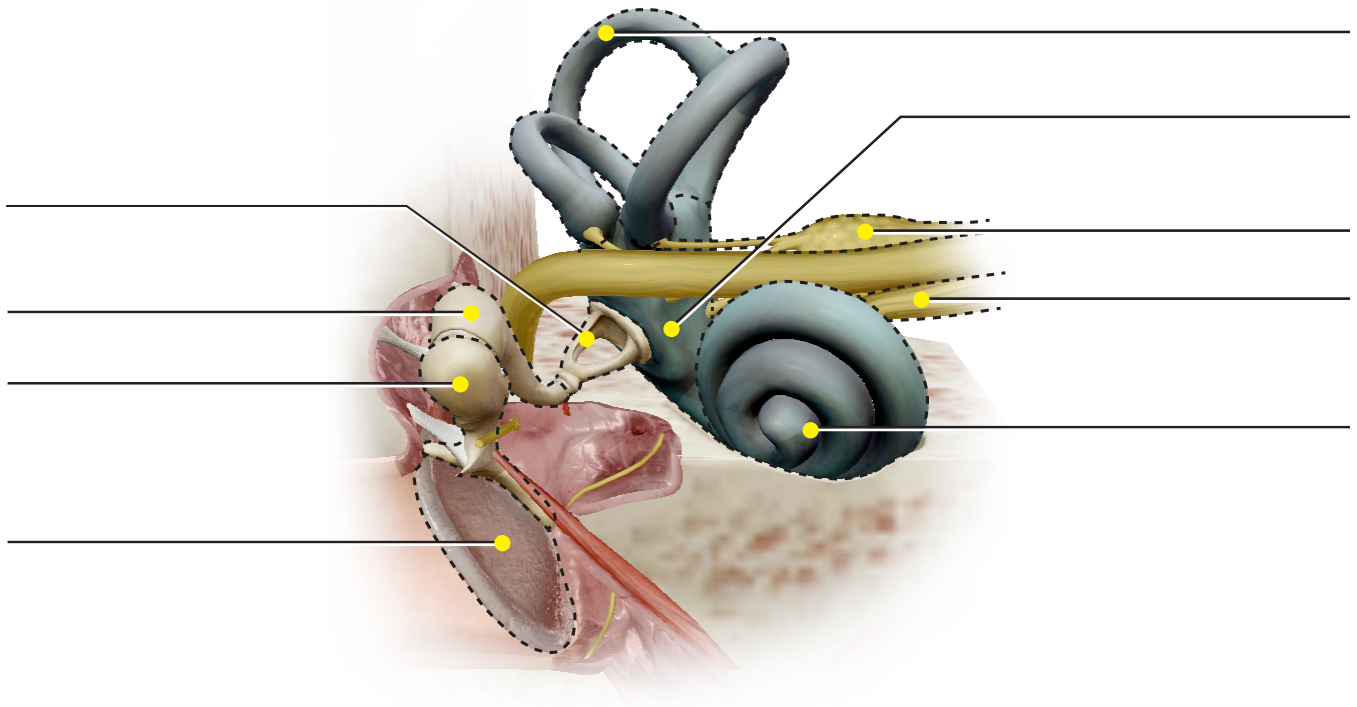
Activity 3: Anatomy of the Eye and Ear Lab

1. Launch the view!

- Launch Human Anatomy Atlas.
- Navigate to Quizzes/Lab Activities, find the Eye and Ear Lab section.
-  **Launch Augmented Reality mode and scan the image below.**
- Don't have AR? Select **view 2. Ear.**

2. Label the image.

- Explore the 3D model of the inner ear to locate the anatomy in the structure list.
- Use the structure list to label the image.




Structure list:

- | | |
|-----------------------------------|------------------------|
| 1. CN 08 (VIII) Vestibulocochlear | 6. Semicircular canals |
| 2. CN 08 (VIII) Cochlear | 7. Stapes |
| 3. Cochlea | 8. Tympanic membrane |
| 4. Incus | 9. Vestibule |
| 5. Malleus | |

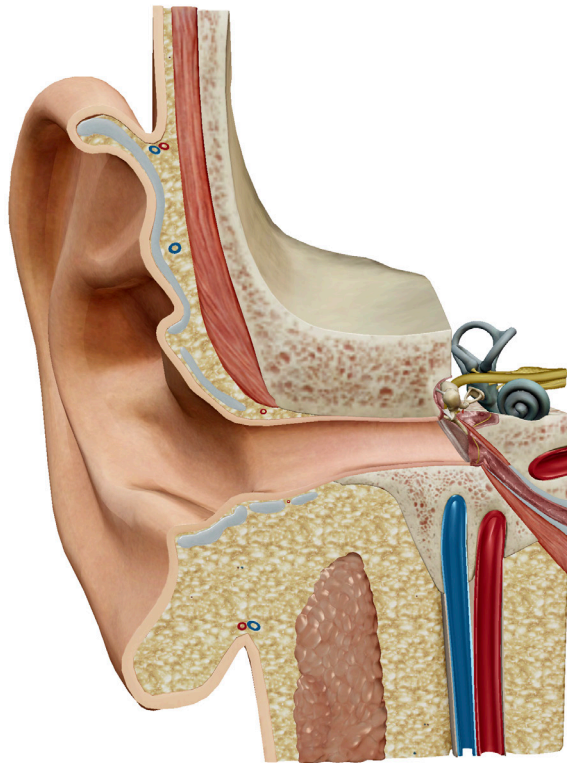
Activity 4: Anatomy of the Eye and Ear Lab

1. Launch the view!

- Launch Human Anatomy Atlas.
- Navigate to Quizzes/Lab Activities, find the Eye and Ear Lab section.
-  **Launch Augmented Reality mode and scan the image below.**
- Don't have AR? Select **view 2. Ear.**

2. Fill in the blanks.

- Find the structures listed in the word bank.
- Read the definitions, then fill in the blanks with the correct ear structures from the word bank.



Name: _____

Date: _____

Word bank:

- Auricle
- Cochlea
- External acoustic meatus
- Incus
- Inner ear
- Malleus
- Middle ear
- Outer ear
- Oval window
- Semicircular canals
- Stapes
- Tympanic membrane
- Vestibule

The _____, known as the “stirrup,” is one of the auditory ossicles of the middle ear. It plays a key role, with the malleus and incus, in transferring vibrations from the tympanic membrane to the oval window to facilitate hearing.

The _____ funnels sound waves. It consists of the auricle and the external acoustic meatus. It is the outermost section of the ear.

The _____ is a spiral-shaped structure of the inner ear that looks like a shell. When it receives movement from the three auditory ossicles, fluid inside it moves. These fluid waves move hair cells, which activates nervous system receptors. Signals travel to the brain, where they are interpreted as sound.

The _____ is a passageway from the bottom of the concha to the tympanic membrane. It forms an S-shaped curve.

The _____ contains fluid-filled canals that contribute to hearing and balance. It’s the innermost part of the ear and contains two types of labyrinths: A bony labyrinth with a series of cavities, including the semicircular canals and the vestibule, and a membranous labyrinth.

The _____ contains three auditory ossicles, the malleus, incus, and stapes.

The _____, known as the “hammer,” is one of the auditory ossicles of the middle ear. It plays a key role in transferring vibrations from the tympanic membrane to the incus to facilitate hearing.

Name: _____

Date: _____

The _____ is composed of a curved helix and an inferior part called the lobule.

_____ provide sensory input for equilibrium. There are three of these in the inner ear: superior, posterior, and lateral. Each of these has an expansion at one end, called the ampulla, which contains fluid known as endolymph. As the head rotates or moves, the movement of the endolymph causes hair cells to bend, generating nerve impulses.

The _____, known as the "anvil," is one of the auditory ossicles of the middle ear. It plays a key role, with the malleus, in transferring vibrations from the tympanic membrane to the stapes to facilitate hearing.

The _____, also known as the ear drum, is a thin, nearly oval membrane. When sound waves strike this structure, it creates vibrations that travel to the bones of the middle ear to facilitate hearing.

The _____ is the central part of the bony labyrinth of the inner ear.

The _____ is an opening that leads from the middle ear to the vestibule of the inner ear. Vibrations, transferred from bone to bone in the middle ear, hit this membrane, causing it to vibrate and build pressure waves in the cochlea. This begins a process that generates nerve impulses.